

ELMO1 Antibody
Rabbit mAb
Catalog # AP91741**Specification**

ELMO1 Antibody - Product Information

Application	WB, FC, ICC, IP
Primary Accession	Q92556
Reactivity	Rat
Clonality	Monoclonal
Other Names	
CED12; Ced12 homolog 1; ELMO 1;	

Isotype	Rabbit IgG
Host	Rabbit
Calculated MW	83829 Da

ELMO1 Antibody - Additional Information

Dilution	WB~~1:1000 FC~~1:10~50 ICC~~N/A IP~~N/A
Purification	Affinity-chromatography
Immunogen	A synthesized peptide derived from human ELMO1
Description	Involved in cytoskeletal rearrangements required for phagocytosis of apoptotic cells and cell motility. Acts in association with DOCK1 and CRK.
Storage Condition and Buffer	Rabbit IgG in phosphate buffered saline , pH 7.4, 150mM NaCl, 0.02% sodium azide and 50% glycerol. Store at +4°C short term. Store at -20°C long term. Avoid freeze / thaw cycle.

ELMO1 Antibody - Protein Information**Name** ELMO1**Synonyms** KIAA0281**Function**

Involved in cytoskeletal rearrangements required for phagocytosis of apoptotic cells and cell motility. Acts in association with DOCK1 and CRK. Was initially proposed to be required in complex with DOCK1 to activate Rac Rho small GTPases. May enhance the guanine nucleotide exchange factor (GEF) activity of DOCK1.

Cellular Location

Cytoplasm. Cell membrane. Note=Translocation to plasma membrane seems to be mediated by DOCK1 and CRK

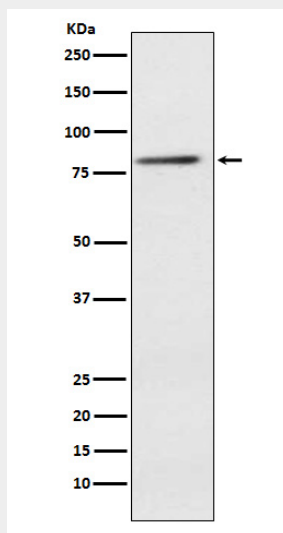
Tissue Location

Widely expressed, with a higher expression in the spleen and placenta

ELMO1 Antibody - Protocols

Provided below are standard protocols that you may find useful for product applications.

- [Western Blot](#)
- [Blocking Peptides](#)
- [Dot Blot](#)
- [Immunohistochemistry](#)
- [Immunofluorescence](#)
- [Immunoprecipitation](#)
- [Flow Cytometry](#)
- [Cell Culture](#)

ELMO1 Antibody - Images

Western blot analysis of ELMO1 expression in Jurkat cell lysate.